

HYDRUS

AUTO REVERSE / AUTO STOP

ARM ASSEMBLY & CONTROL BOX

INSTALLATION INSTRUCTIONS

BILL OF MATERIAL:

ARM ASSEMBLY; (2) Main Arms, (2) Side Plates for Main Arms, (2) Adjustable Arms, (2) Lever Arms, (1) Tower Box Mounting Bracket, (2) Mounting Bracket Plates, (2) Tension Springs, (2) Turnbuckles and (1) Cable.

Mounting Hardware; (4) 3 1/2" X 1/2" Main Arm Bolts, (6) 3" X 1/2" Adjustable & Lever Bolts, (10) 1/2" Lock Washers, (10) 1/2" Nuts, (20) 1/2" Flat Washer, (4) 3" X 3/8" Tower Box Mounting Bracket Bolts, (4) 3/8" Lock Washers, (4) 3/8" Nuts, (3) 1" X 5/16" Tower Box Mounting Bolts, (3) 5/16" Lock Washers, (3) 5/16" Nuts.

(1) 20' 7 Conductor Cable

NOTE: Because of the universal nature of this kit, the end user must provide hardware to mount to the tower leg.

Assembling the Arms:

1. Place the Main Arms end to end with the bolt holes horizontal. Place the side plates on each side of the Main Arms (Figure 1).

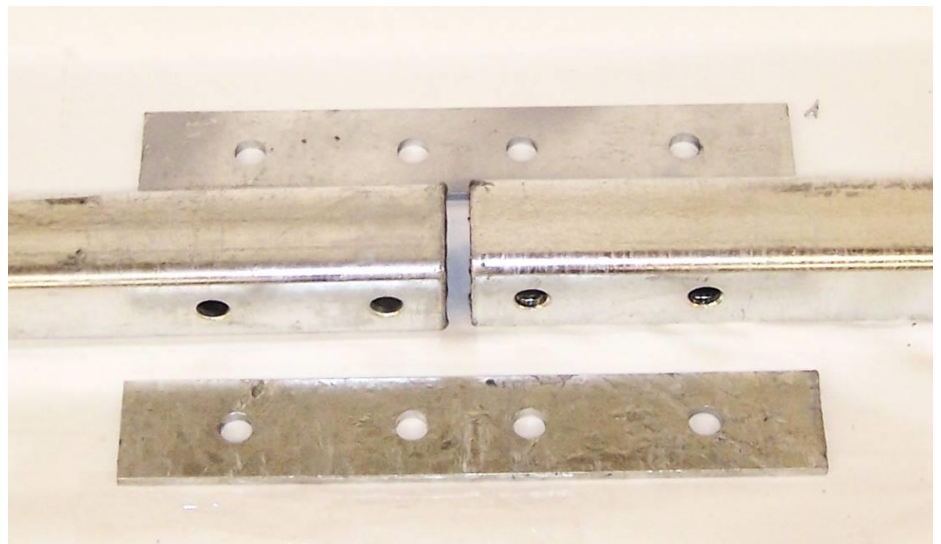


Figure 1

2. Use the supplied (4) 3 ½" X ½" bolts to attach the side plates to the Main Arms (Figure 2).



Figure 2

3. Slide the Adjustable Arms into the Main Arms. There are two sets of bolt holes; the first set of holes is for standard width tower leg and the second set is for extended width tower leg. Use the supplied 3" X ½" bolts to secure the two assemblies (Figure 3).

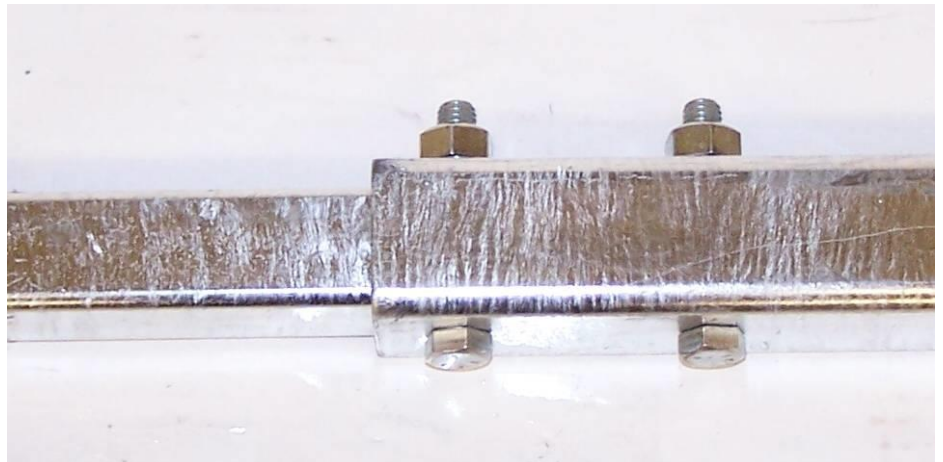


Figure 3

4. Install the Tower Box mounting bracket in the center of the Main Arms using the supplied (4) 3" X 3/8" bolts (Figure 4). After installing the bracket, mount the arm assembly to the tower leg.



Figure 4

5. The tower box is supplied with a stiffening bracket. Install the stiffening bracket loosely to the tower box. Next, install the tower box to the mounting bracket using the (3) 1" X 5/16" bolts. After tightening the mounting bolts, finish tightening the U-Clamp bolts of the stiffening bracket. (Figure 5)

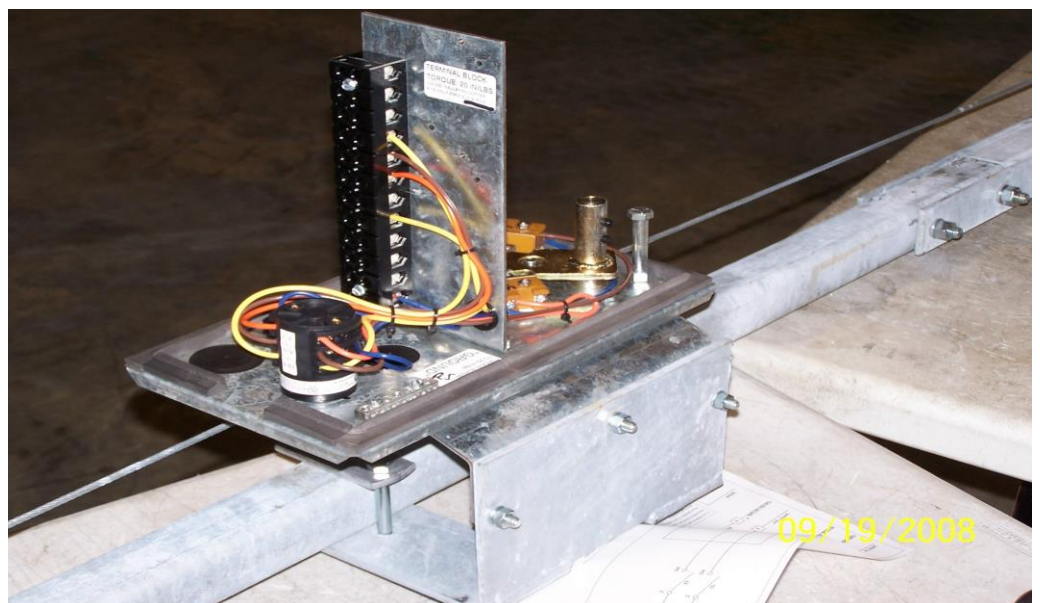


Figure 5

6. Remove the cable clamp and reinstall as shown (Figure 6) with the cable loosely secured in the clamp.

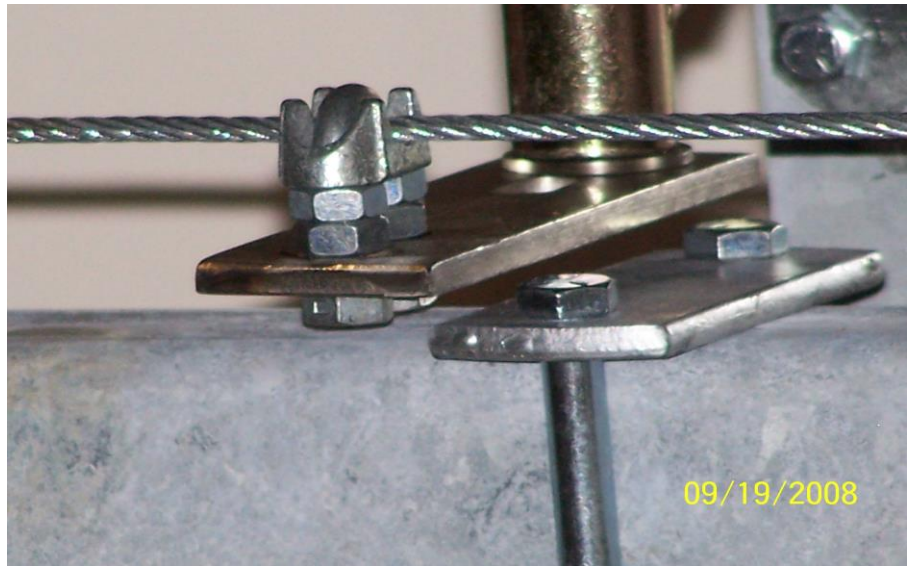


Figure 6

7. Install the Lever Arms using supplied 3" X 1/2" bolts (Figure 7). Leave the bolts loose until the springs are attached to the arm and cable.

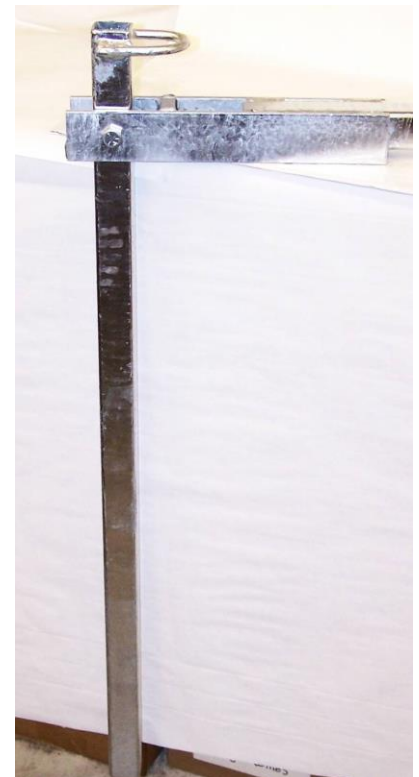


Figure 7

8. Attach the spring to the Lever Arm and cable on one side (Figure 8). On the other side remove the bolt from the Lever Arm; slide it up out of the pivot point to attach the spring and cable. Slide the Lever Arm down until the bolt holes align and replace bolt. If this procedure is too difficult, remove the bolts from both Lever Arms, raise the arms, attach both springs and slowly slide the arms back into position.



Figure 8

9. Extended width tower leg assembly, use the supplied turnbuckles to connect the spring and Lever Arm (Figure 9&10). Loosen both turnbuckles as far as you can, attach one end to the Lever Arm and the other end to the spring. Refer to step 8 for final assembly. Tighten the turnbuckles equally until there is 70-90lbs of tension on each arm.

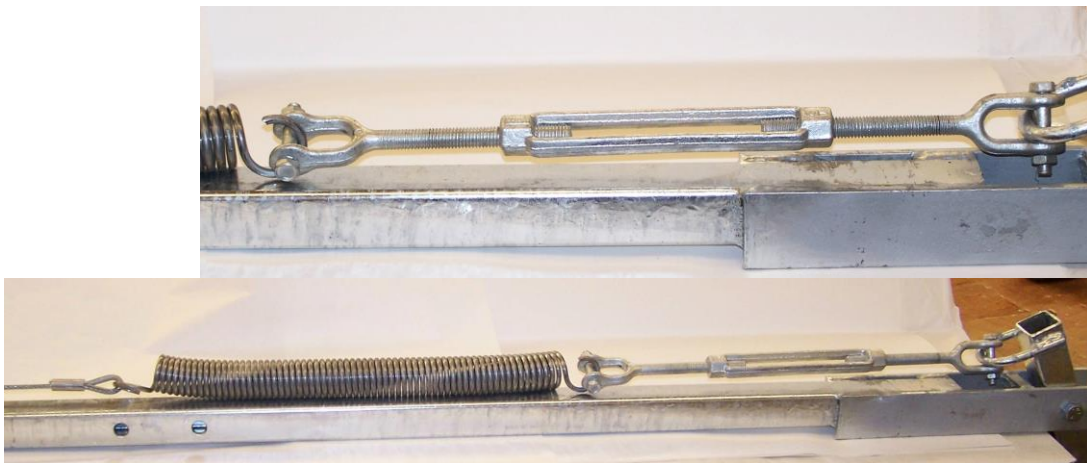


Figure 9 & 10

10. Tighten the cable clamp on the tower box. Make sure that the cam is in the center or neutral position (Figure 11). Wire the tower box with the supplied 7 conductor cable and carefully read the wiring diagram to connect to the end tower box.

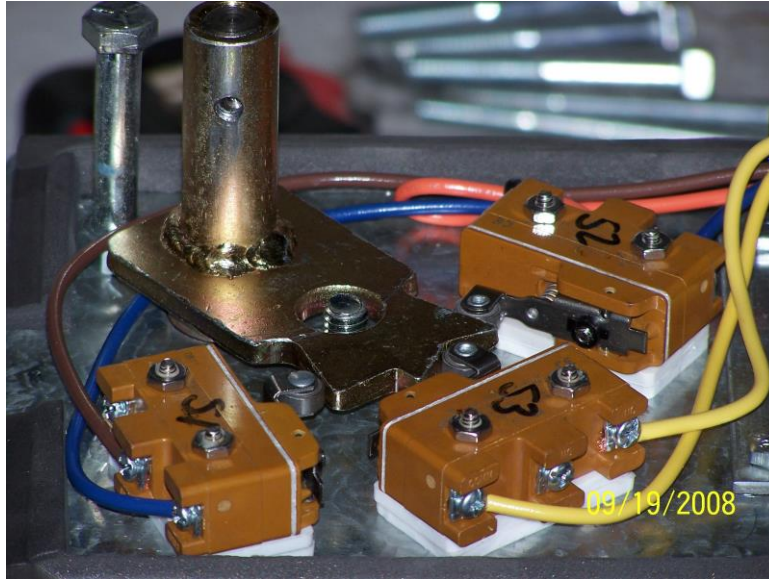


Figure 11