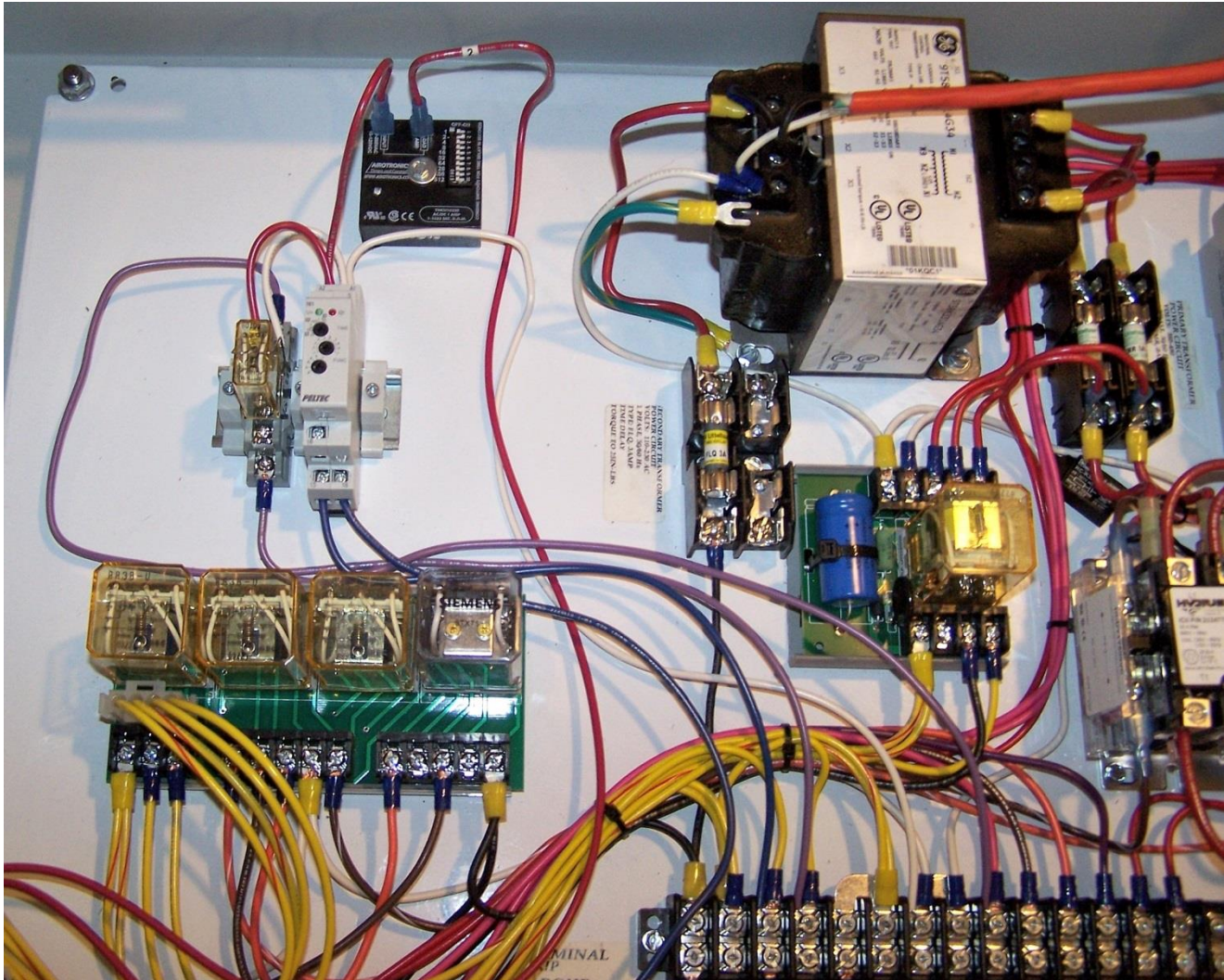


HYDRUS 2300V

INSTALLATION INSTRUCTIONS

P/N: 3052300626 AUTO START/AUTO SHUTDOWN OPTION



BILL OF MATERIAL: (1) One Shot Timer (P/N: 2041724002), (1) Delay On Make Timer (P/N: 2041724004), (1) Relay (P/N: 2037270013), (1) Relay Socket (P/N: 2037270004), (1) ON-OFF SPST Switch (P/N: 2039270004), (1) Pressure Switch (P/N: 2033200002), (1) 3" Din Rail (P/N: 2045724001), Black Wire for switches, (1) 8-32 X 1½" Self Tapping Screw, (1) Washer, (2) 8-32 X ½" Self-Tapping Screws, (1) Panel Switch Label, (10) Cable Ties & (1) #25 Drill Bit

TOOLS REQUIRED: (1) #2 PHILLIPS SCREWDRIVER, (1) #3 PHILLIPS SCREWDRIVER, (1) FLAT SCREWDRIVER, (1) 4mm FLAT SCREWDRIVER, (1) ¼" Nut Driver & (1) DRILL

NOTE: All components are prewired and numbered for ease of installation. If any of the wires are removed or become disconnected, refer to the wiring diagram for reconnection.

CAUTION: Before attempting to drill any holes in the backplate, cover the existing electrical components to prevent metal shaving contamination.

DIN RAIL MOUNTING: Mount the DIN rail above the Directional Control Board (Figure 1&2).



Figure 1



Figure 2

DELAY TIMER MOUNTING: This timer is mounted above the DIN rail (Figure 3). Using the supplied drill bit, hold the timer in place and start drilling the mounting hole long enough to leave a mark in the back plate. Remove the timer and finish drilling the hole. Use the 8-32 X 1 1/2" self-tapping screw with the flat washer and mount the timer (Figure 4).



Figure 3



Figure 4

ONE SHOT TIMER & RELAY MOUNTING: Install the one shot timer, end stops and relay on to the DIN rail shown(Figure 5).

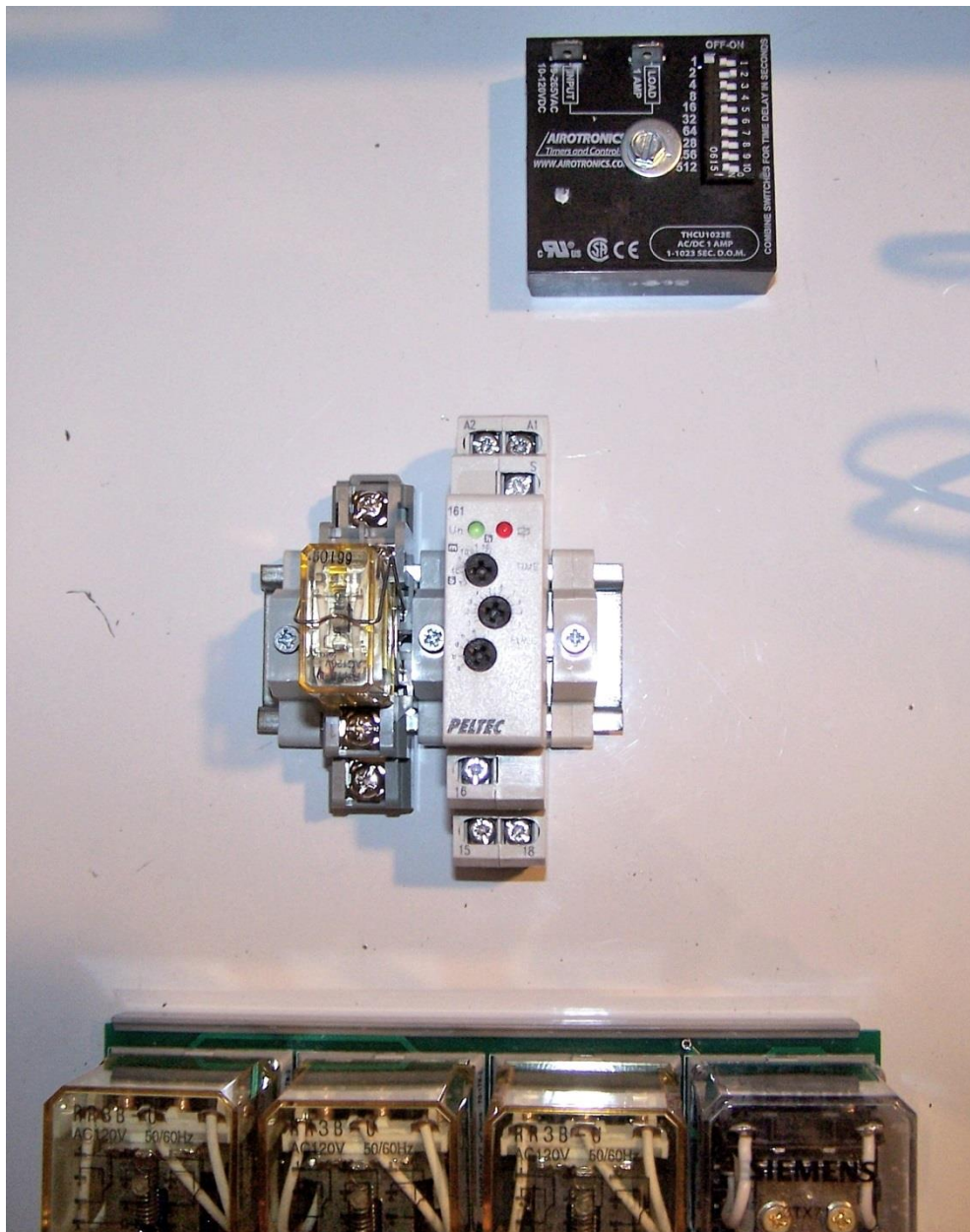


Figure 5

PRESSURE SWITCH MOUNTING: Remove the farthest left knock-out on the bottom of the enclosure (Figure 6).



Figure 6

Remove one of the ring locks from the pressure switch and install the switch (Figure 7&8). Install the ring lock and tighten.



Figure7

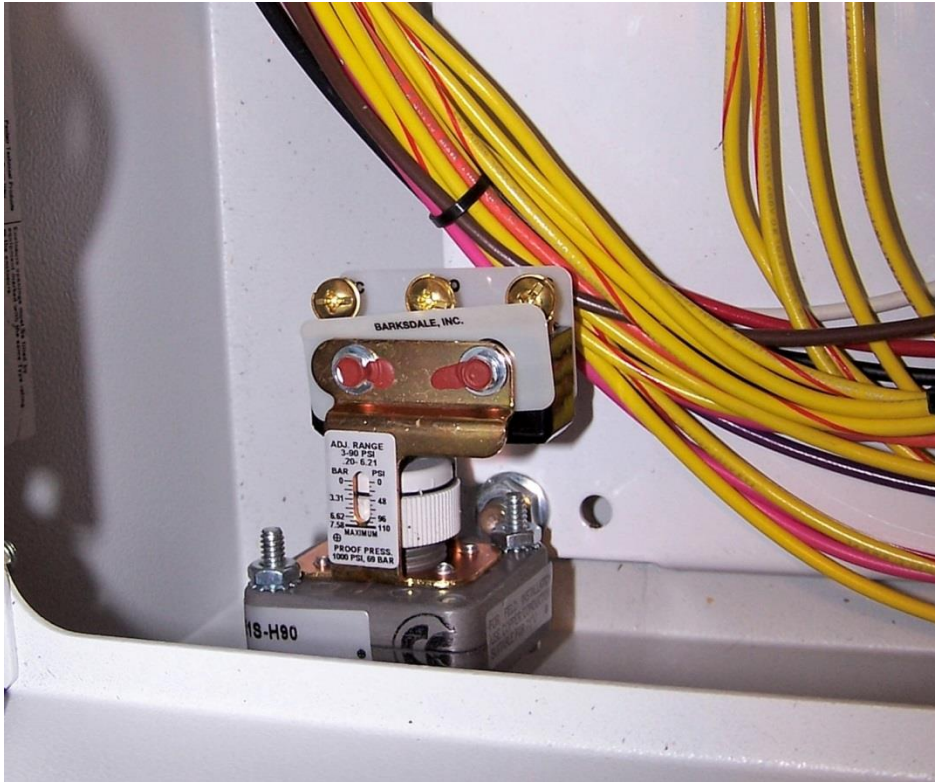


Figure8

WIRING INSTRUCTIONS: Remove the current black wire from the “START/RUN/STOP” switch (Figure 8),

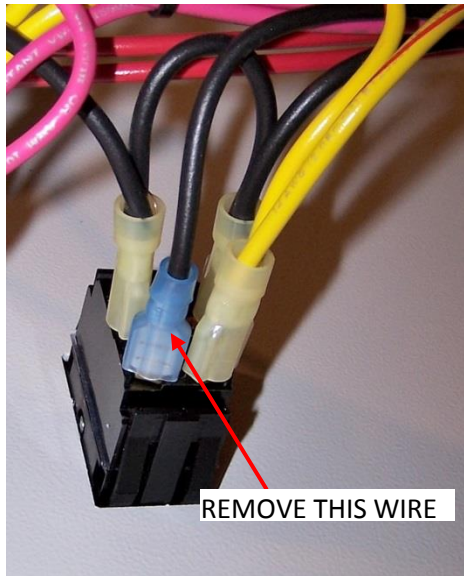


Figure 8

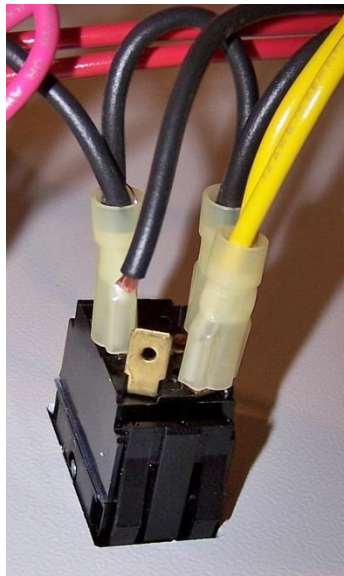


Figure 9

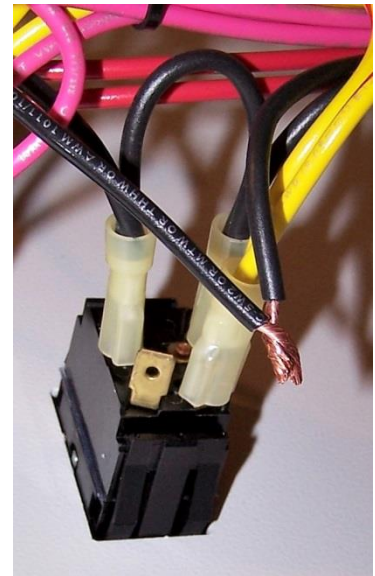


Figure 10

Cut the connector off (Figure9) and strip back the insulation approximately ½" (12mm).

Strip back the supplied black wire approximately ½" (12mm) and twist together with the existing black wire (Figure 10). Use the supplied 10-12 gauge quick connect terminal and crimp the terminal on the black wires (Figure 11).

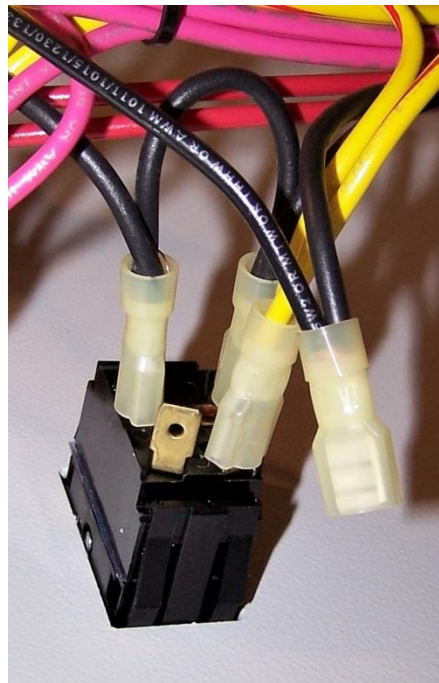


Figure 11

WIRING INSTRUCTIONS CONTINUED:

Remove the switch blank and install the supplied switch. Attach the Blue #4 and black wire to the switch (Figure 12).

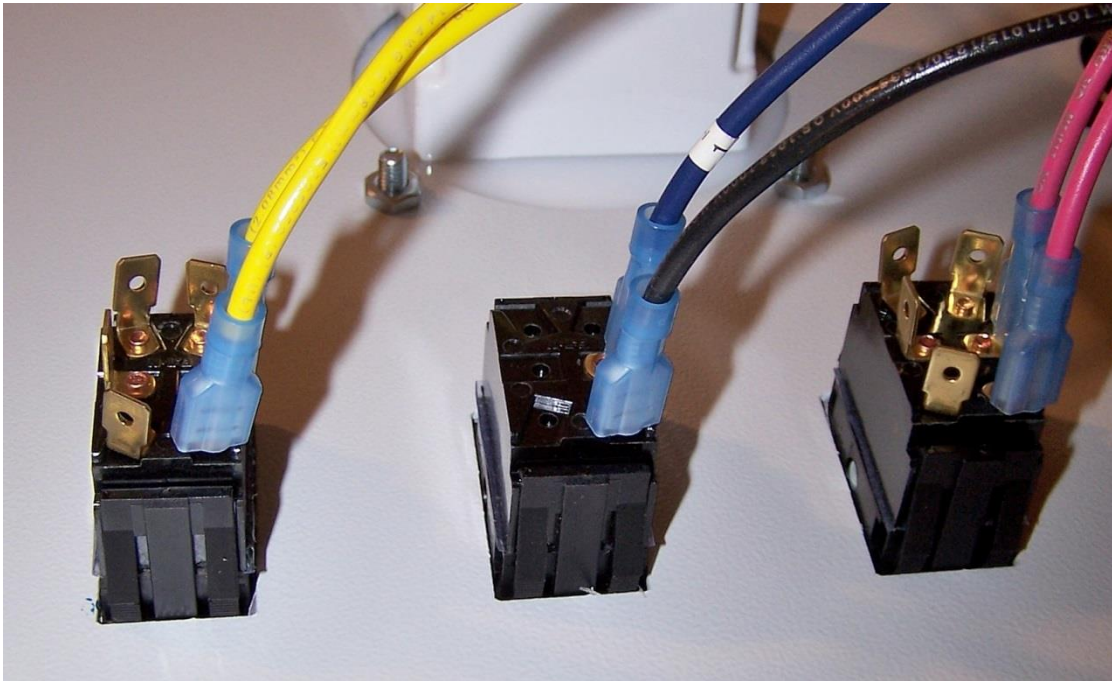


Figure 12

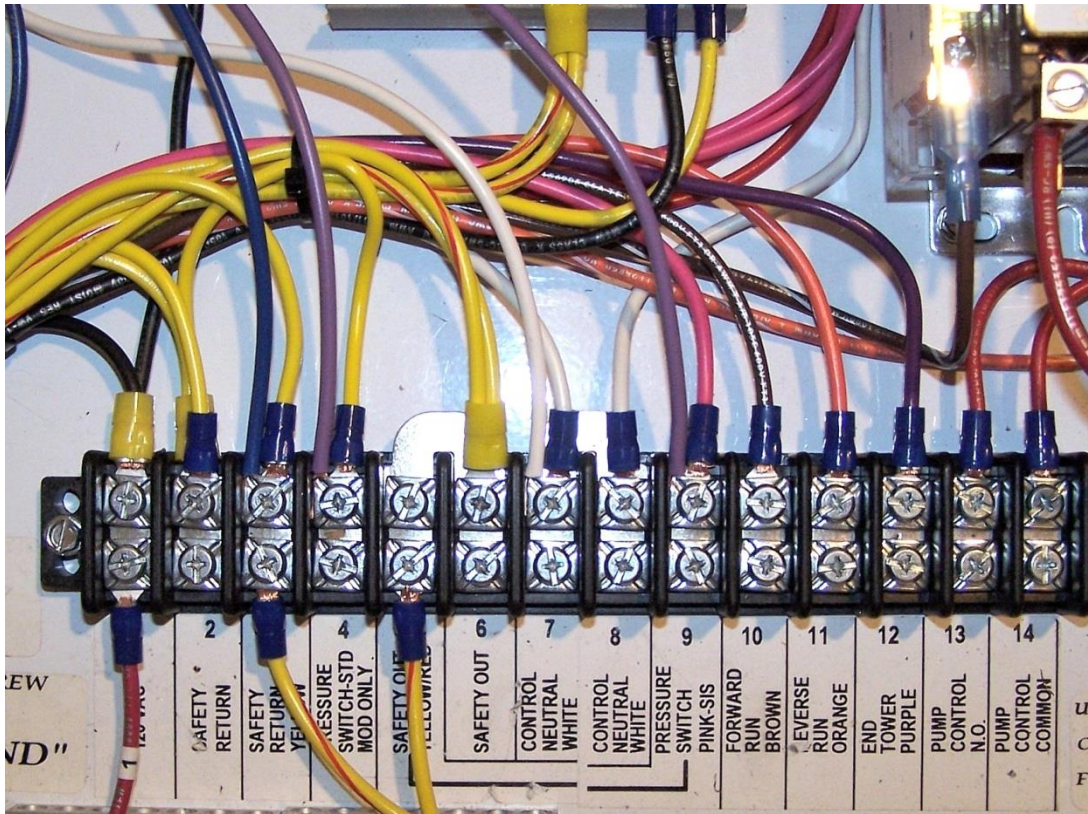
Apply the "AUTO RESTART" label above the newly installed switch.



Figure 13

WIRING INSTRUCTIONS CONTINUED:

The blue wire labeled #5 connects to terminal strip position #3 (Figure 14). The purple wire labeled #6 connects to terminal strip position #4 (Figure 14) and the purple wire labeled #7 connects to terminal strip position #9 (Figure 14). The white wire labeled #10 connects to terminal strip position #7 (Figure 14).



Attach one end of the red wire labeled #1 to the pressure switch “NO” terminal (Figure 15) and connect the other end to terminal strip position #1 (Figure 14).

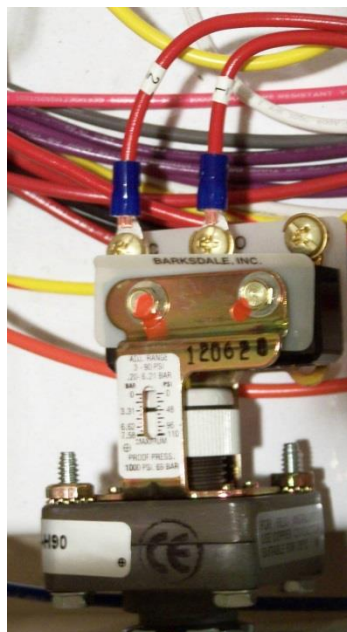


Figure 15

WIRING INSTRUCTIONS CONTINUED:

Attach one end of the red wire labeled #2 to the pressure switch "COM" terminal (Figure 15) and connect the end the delay timer position #1 (Figure 16).

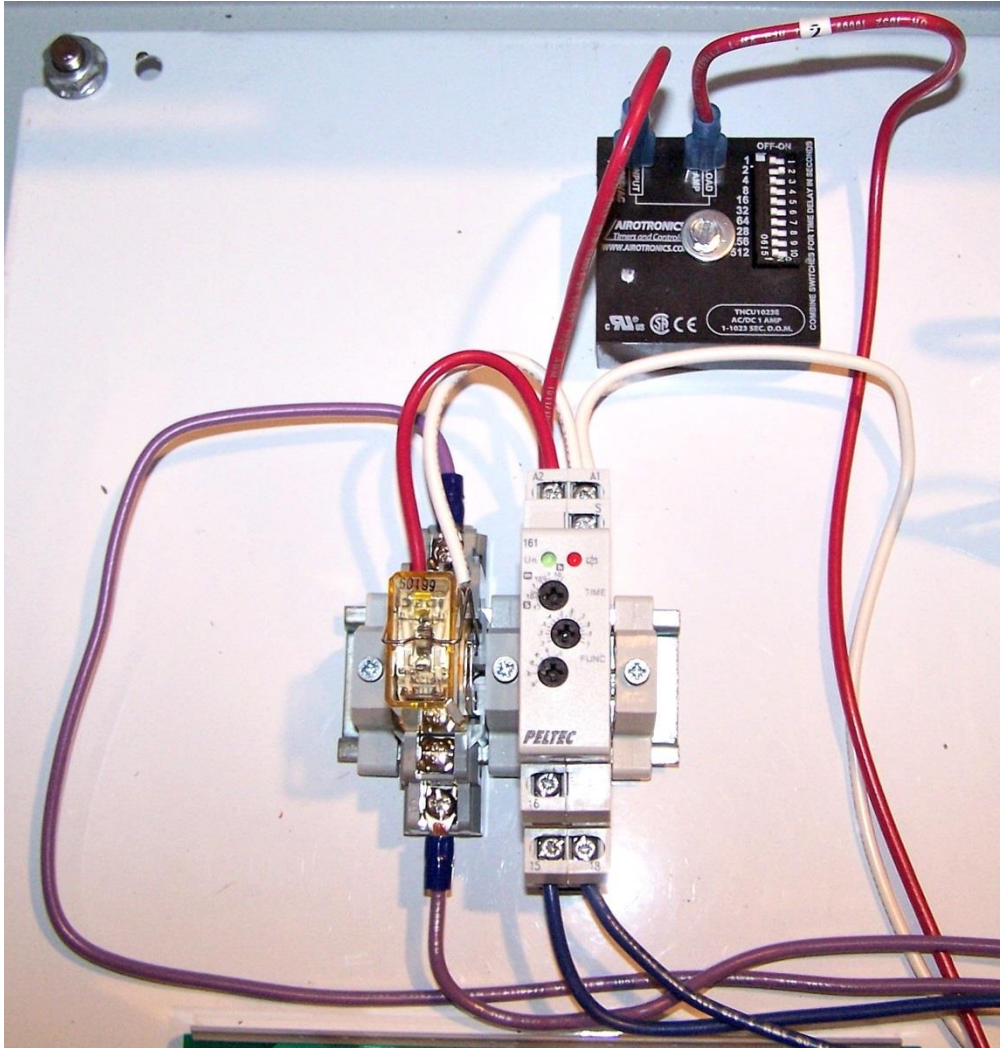


Figure 16

Use the supplied cable ties to secure the wires after all connections have been made.