

IRRIGATION COMPONENTS
P/N: 3000668-M
BARRICADE ASSEMBLY INSTRUCTIONS



BILL OF MATERIAL: Qty. 1, Barricade Assembly (P/N: 3000668) includes the following parts: Qty. 2 Legs

Qty. 2 Leg Extensions

Qty. 2 Cross Bars (Large)

Qty. 2 Arms

Qty. 1 Cross Bar (Small)

Fastening Hardware Kit: Qty. 32 - 1 1/4" X 3/8" Grade 5 Hex Head Cap Screws,
Qty. 2 - 4" X 3/8" Grade 5 Hex Head Cap Screws,
Qty. 34 - 3/8" Grade 5 Lock Nuts,
Qty. 64 - Grade 5 Flat Washers



FIGURE 1

Step 1. Basic Layout (FIGURE 1) - Place the upper and lower crossbars on the ground parallel to each other approximately 30" apart with the longest part of the crossbar flange facing up and down. Next, place the legs perpendicular to the crossbars with the channel side facing out. The legs have two sets of holes in them, the top has the most holes so make sure both legs are orientated the same. Slide the leg extensions into the bottom of each leg so that the 3 sets of holes of the leg extension align with the lower 3 sets of holes of the leg.



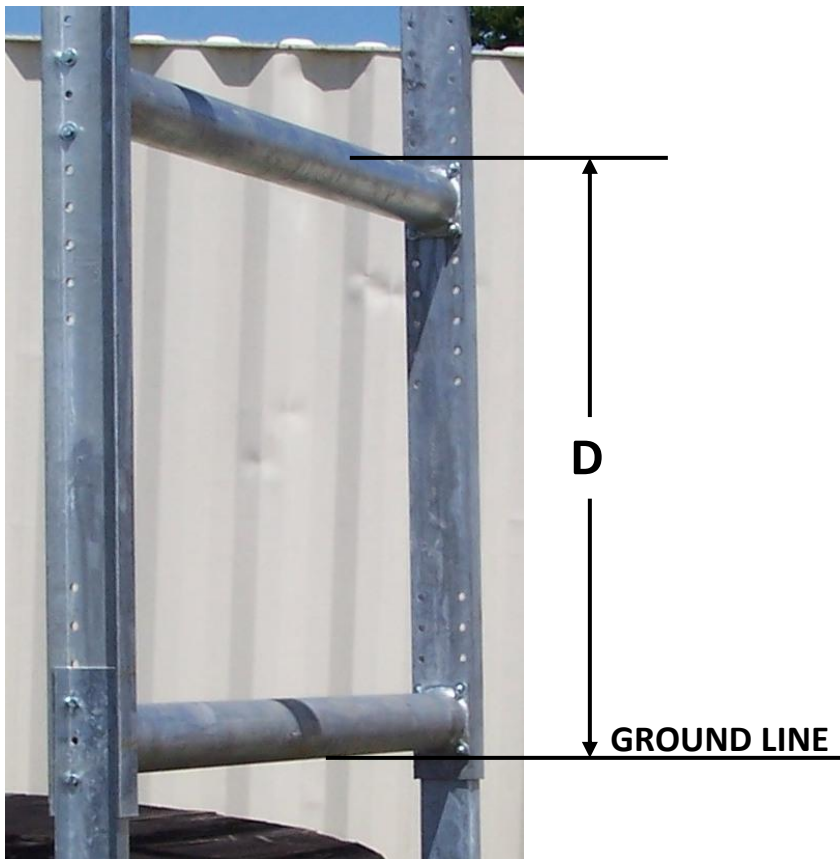
FIGURE 2

Step 2. Legs, Leg Extensions & Lower Crossbar Assembly (FIGURE 2 & 3) - Align the lower crossbar at the bottom 3 sets of holes of the legs. From the channel side, insert the 1 1/4" X 3/8" cap screws through the leg extension, leg and crossbar. Place a washer and lock nut loosely on all eight positions. Please note, because the leg extensions slide onto the leg channel there is not enough room for washers to fit correctly, they are not used.



FIGURE 3

Step 3. Legs & Upper Crossbar (FIGURE 4) – Using the chart below, place the upper crossbar so that the middle of the upper crossbar to the bottom of the lower crossbar equals the tire size of the pivot. Loosely fasten the upper crossbar from the channel side insert the 1 $\frac{1}{4}$ " X $\frac{3}{8}$ " cap screws with the washers on both sides (FIGURE 5). You can now tighten both lower and upper crossbars.



DESCRIPTION	D(INCHES)
9.00 x 20 RECAP	34-36
11.2 x 24 NEW	36-38
11 x 24.5 RECAP	38-40
14.9 x 24 NEW	42-44
16.9 x 24 NEW	44-46
11.2 x 38 NEW	50-52

FIGURE 4

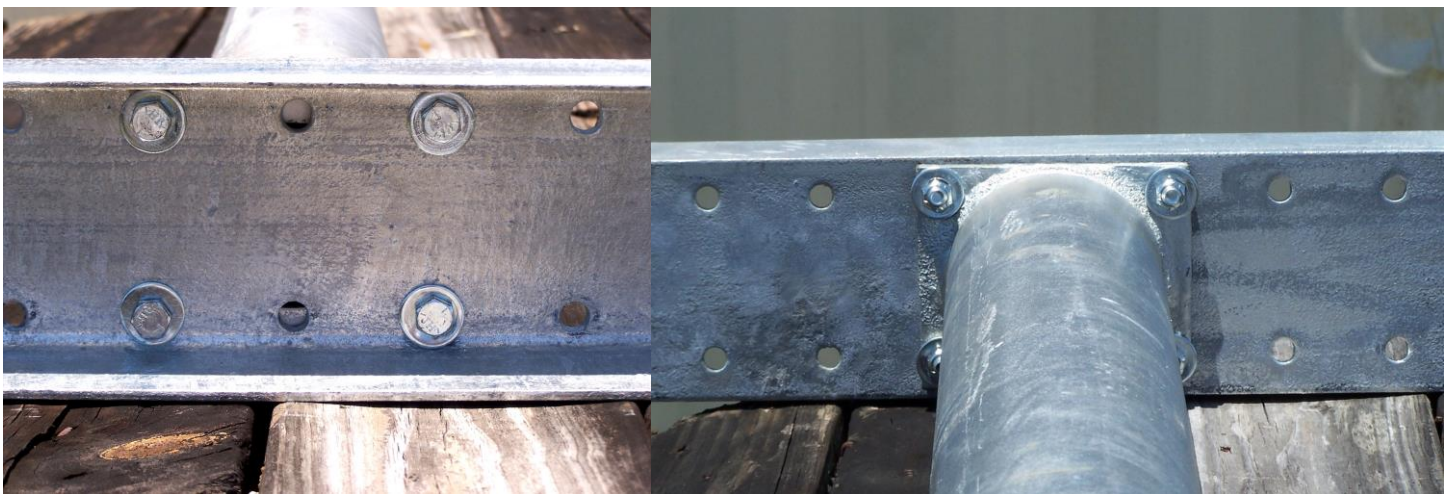


FIGURE 5

Step 4. Arms & Small Crossbar (FIGURE 6 & 7) - Attached both arms to the inside of the top sets of holes on the legs with the 1 1/4" X 3/8" cap screws using washers on both sides. Slide small crossbar through the arm's large holes and insert the 4" X 3/8" cap screws with no washers on each end of the crossbar. Tighten the lock nut until there is a small amount of threads past the nut head.



FIGURE 6



FIGURE 7

Step 5. Field Installation – See diagram below

