

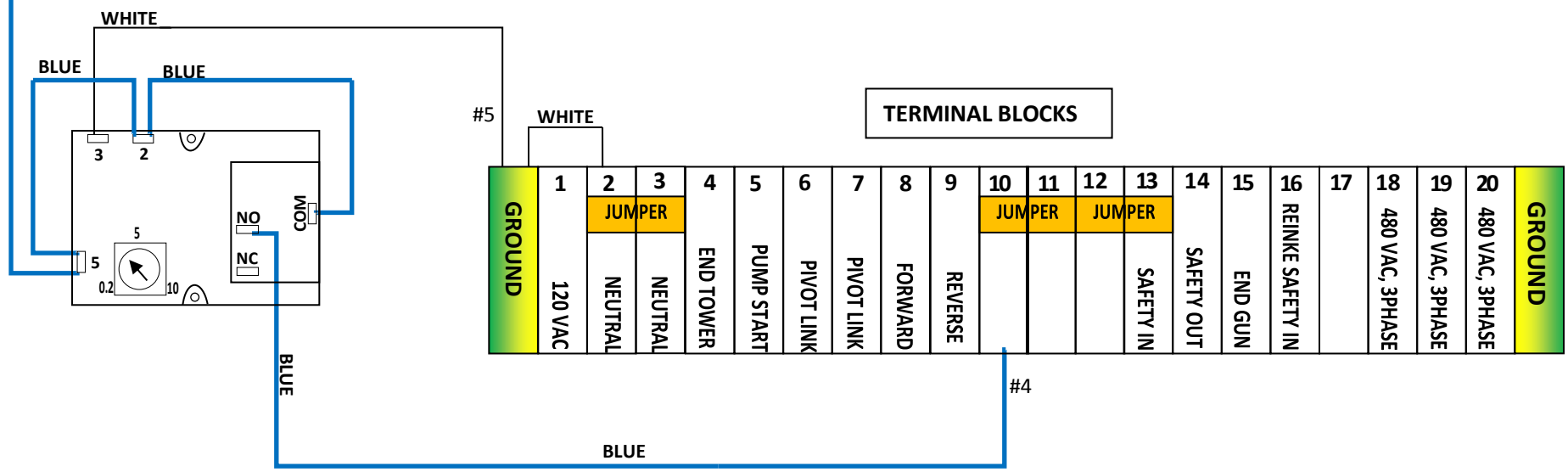
SET UP PROCEDURE:

1. The "START/RUN/STOP" switch is placed in the "RUN" position.
2. The "AUX" switch is placed in the "ON" position.

Sequence of Operation:

AUTO START - When power returns to the system, the "ONE SHOT TIMER" relay contacts close and send power to terminal block #10 for 2-4 seconds. That power energizes the rectifier that feeds power to the coil of the "SAFETY RELAY". The pivot starts operating.

NOTE: The pivot safety circuit is always active in either manual or auto starting sequence.



HYDRUS 2300 AUTO RESTART
P/N: 3052300603

BILL OF MATERIALS: (2) #8-32 SELF THREADING HEX HEAD SCREWS, (1) #25 DRILL BIT, (15) 4" CABLE TIES, (1) "AUTO RESTART" SWITCH LABEL, (1) AUTO RESTART TIMER PREWIRED, RELACEMENT RED WIRE & WIRING DIAGRAM.