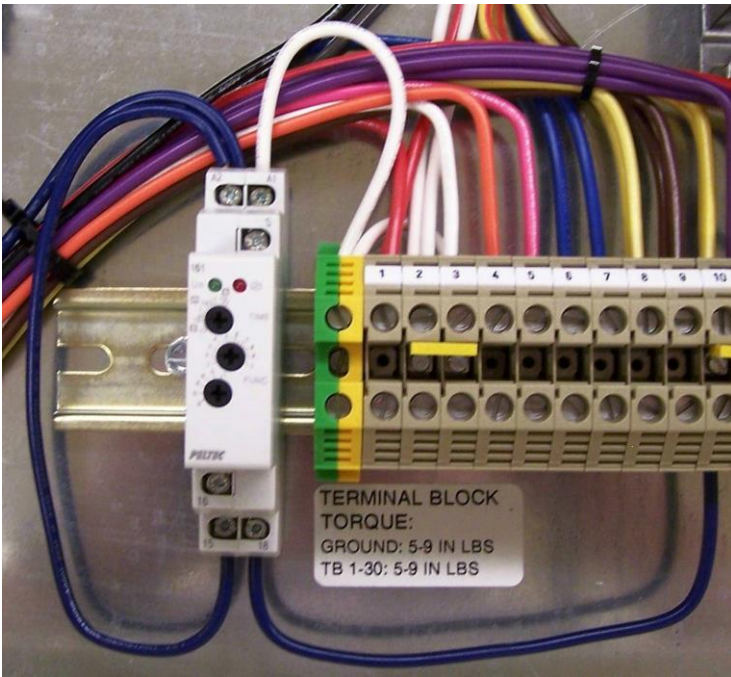
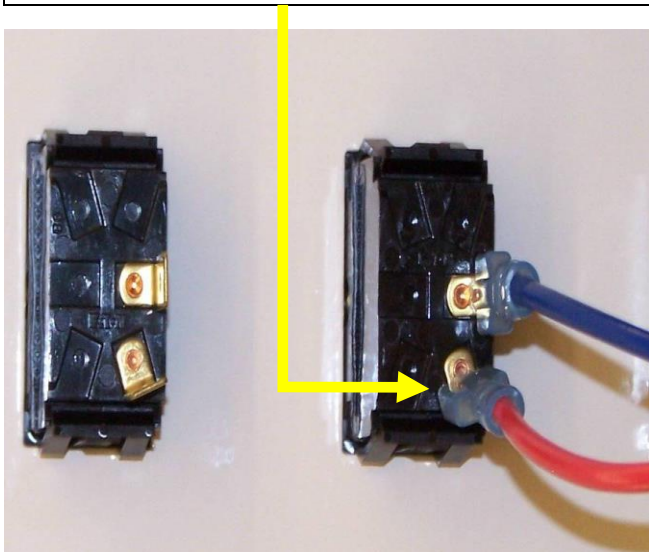


AUTO RESTART INSTALLATION (HYDRUS 2300 PANEL)



- Auto Restart timer is mounted left of the left-hand ground block.
- The “Neutral” White wire from “A1” is connected to the ground block.
- The Blue wire form “A2” is connected to the center position of the “Aux” switch.
- The Blue wire from “18” is connected to “A2”.
- The Blue wire from “15” is connected to “TB 10”.

Attach the terminal connector end of the provided Red wire as shown below.



Pull the current terminal connector off the position shown and cut the terminal off as close as possible to the terminal.

Insert the Red wire from the “Aux” switch and the Red wire of the “Start/Run” switch into the provided Yellow terminal connector and reattach to position shown

