

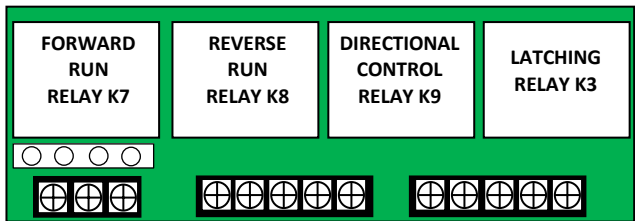
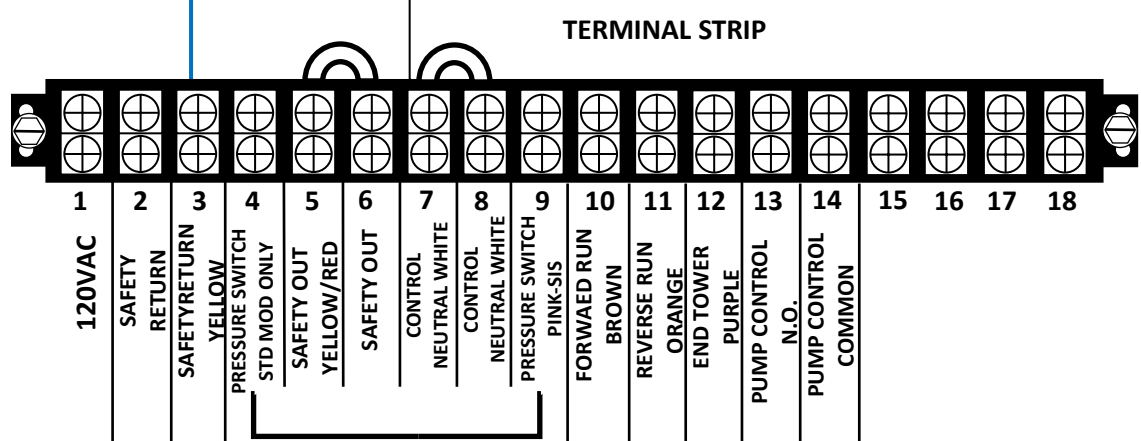
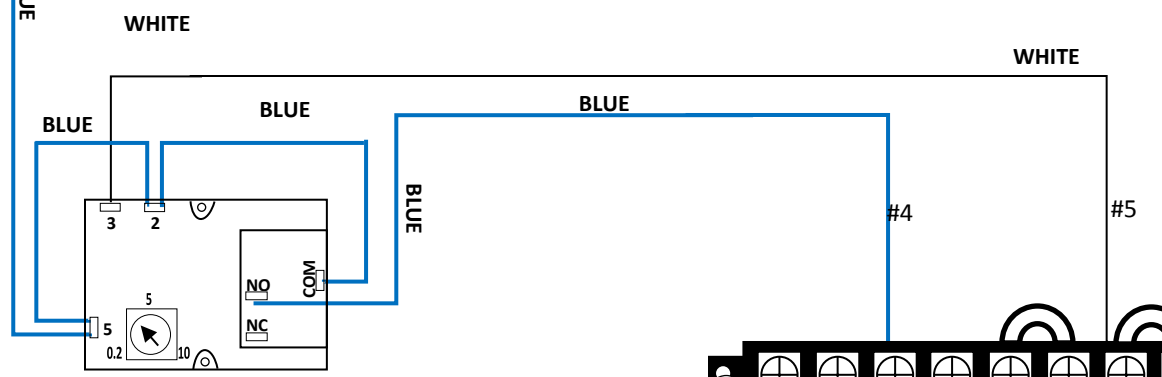
SET UP PROCEDURE:

1. The "START/RUN/STOP" switch is placed in the "RUN" position.
2. The "AUX" switch is placed in the "ON" position.

Sequence of Operation:

AUTO START - When power returns to the system, the "ONE SHOT TIMER" relay contacts close and send power to terminal strip position #3 for 2-4 seconds. That power energizes the safety circuit and the pivot starts operating.

NOTE: The pivot safety circuit is always active in either manual or auto starting sequence.



**HYDRUS 2300 V PANEL
AUTO RESTART
P/N: 3052300623**

BILL OF MATERIALS: (1) SPST SWITCH, (1) QUICK CONNECT TERMINAL, (2) #8-32 SELF THREADING HEX HEAD SCREWS, (1) #25 DRILL BIT, (15) 4" CABLE TIES, (1) "AUTO RESTART" SWITCH LABEL, (1) AUTO RESTART TIMER PREWIRED, RELACEMENT BLACK WIRE & WIRING DIAGRAM.