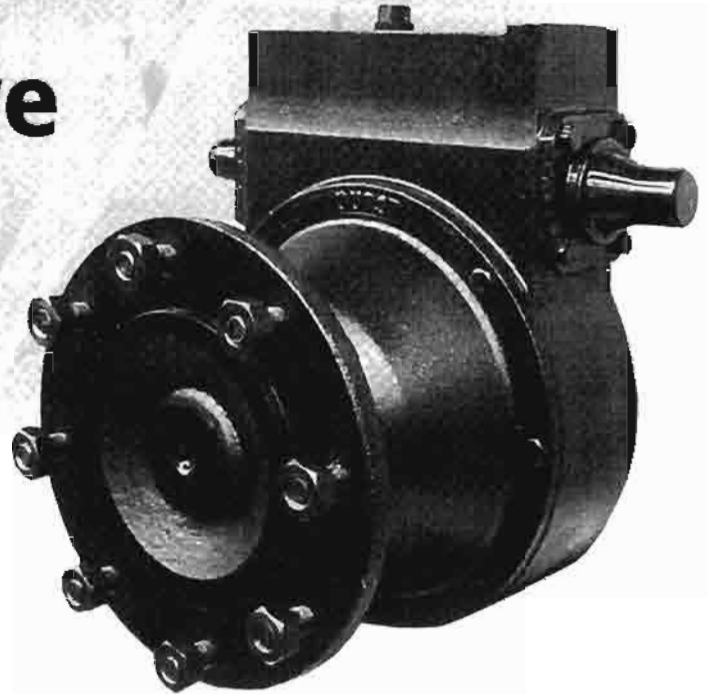


DURST

Heavy-Duty Wheel Drive

DURST GEARBOX FEATURES

- Heavy-Duty Gearbox with Universal Mounting
- Totally Enclosed Internal Air Expansion Chamber
- High Tensile Strength Worm Shaft
- Most Durable Worm Gear Available
- One-Piece High Strength Output Shaft
- Heavy-Duty Taper Roller Bearings
- Extreme-Duty Ductile Iron Endcaps



- New Self-Contained Cartridge Style Input and Output Shaft Seals Eliminating Oil Leaks
- Plated Steel Cover for Protection of Unused Input Shaft
- Dyno-Lab Testing Proves the New Durst-Designed A1339 Wheel Drive is 30% Stronger than the Competition
- Date Coded Unit for Accurate Warranty
- ISO 9000 Registered Factory Featuring Rigid Quality Control Standards

The Leader in Design and Quality for over 40 Years

DURST

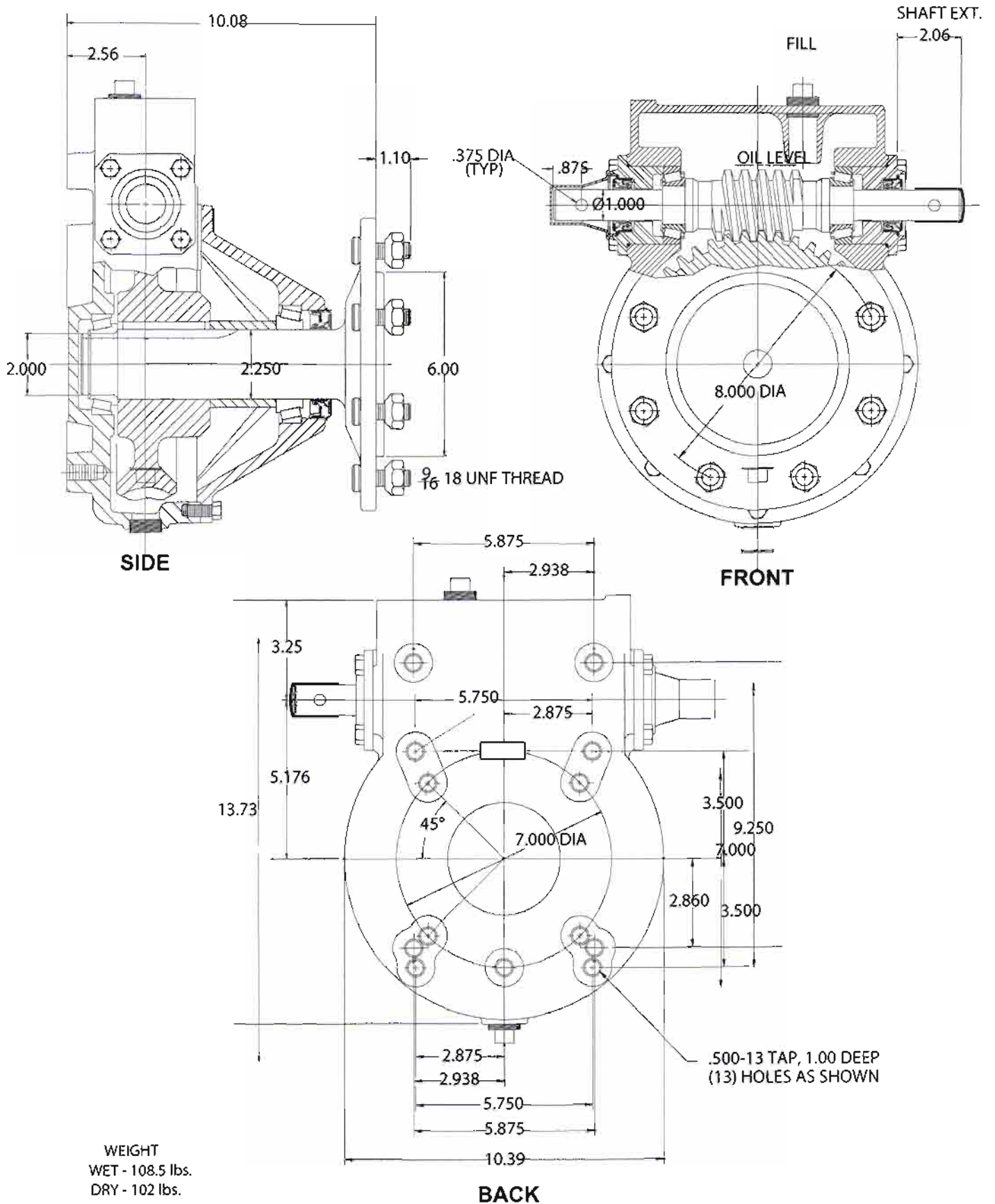
A Division of Regal-Beloit Corporation

P.O. Box 298 • Beloit, WI 53511

Phone: 608-365-2563 • Fax: 608-365-2182

www.durstdrives.com

Dimensional Drawing A1339-7824



WEIGHT
WET - 108.5 lbs.
DRY - 102 lbs.