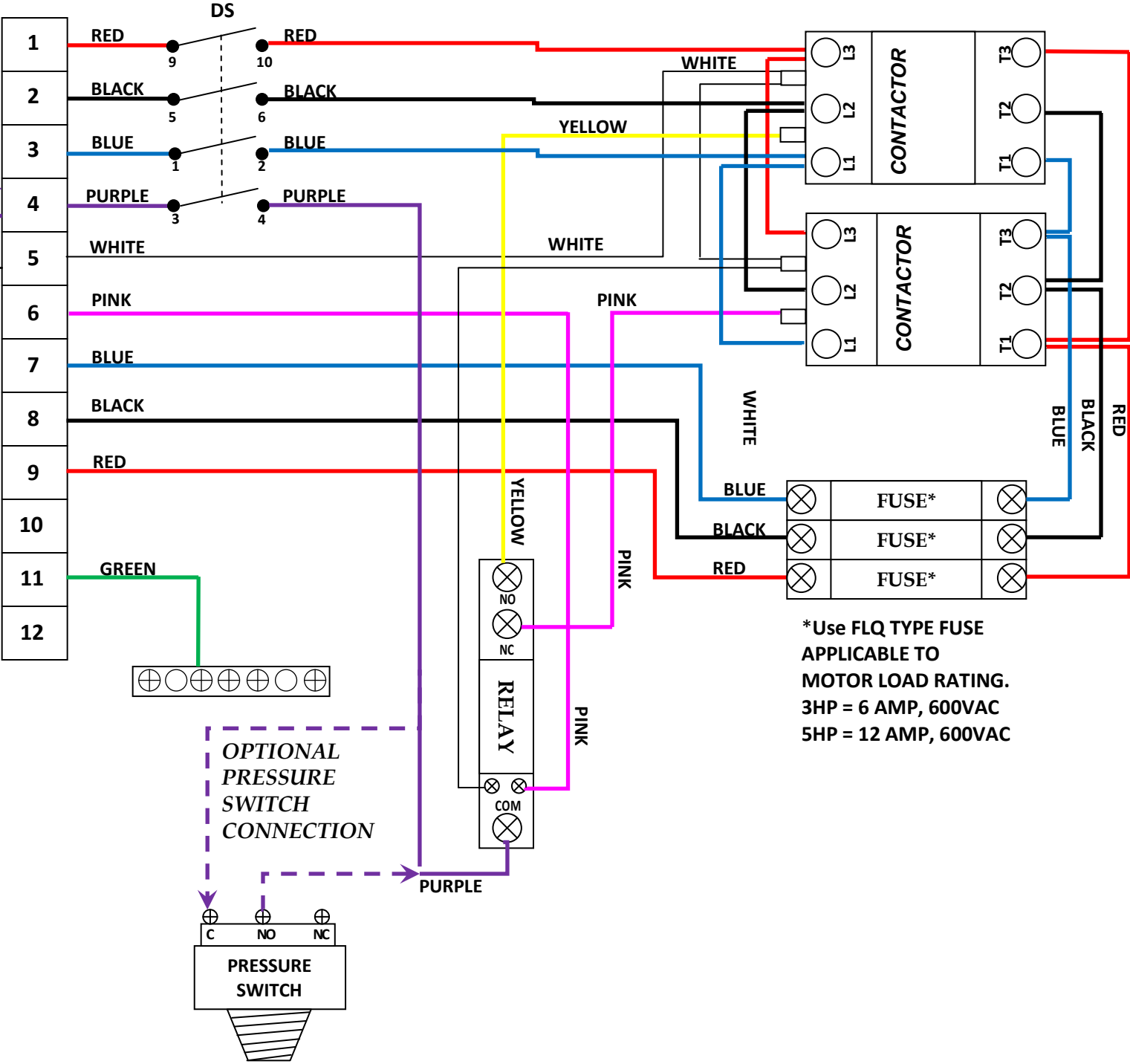


WIRE ORIGINATES AT TERMINAL BLOCK #15 OF THE MAIN CONTROL PANEL. CONTROL IS THE END GUN SWITCH OF THE MAIN CONTROL PANEL.

2" END GUN VALVE



\*Use FLQ TYPE FUSE APPLICABLE TO MOTOR LOAD RATING.  
 3HP = 6 AMP, 600VAC  
 5HP = 12 AMP, 600VAC

LINDSAY STYLE BOOSTER PUMP  
 P/N: 8010