

HYDRUS

INSTALLATION INSTRUCTIONS

P/N: 3606 AUTO START/AUTO SHUTDOWN OPTION

BILL OF MATERIAL: (1) One Shot Timer (P/N: 126), (1) Delay On Make Timer (P/N: 129), (1) Relay (P/N: 810), (1) Relay Socket (P/N: 811), (1) Pressure Switch (P/N: 5727), Replacement Safety Relay Wire, (1) 8-32 X 1½" Self Tapping Screw, (1) Washer, (1) Panel Switch Label, (10) Cable Ties & (1) #25 Drill Bit

TOOLS REQUIRED: (1) #2 PHILLIPS SCREWDRIVER, (1) FLAT SCREWDRIVER, ¼" Nut Driver & (1) DRILL

NOTE: All components are prewired and numbered for ease of installation. If any of the wires are removed or become disconnected, refer to the wiring diagram for reconnection.

ONE SHOT TIMER & RELAY MOUNTING : Place the timer and relay on the DIN rail next to the left Ground terminal block (Figure 1).

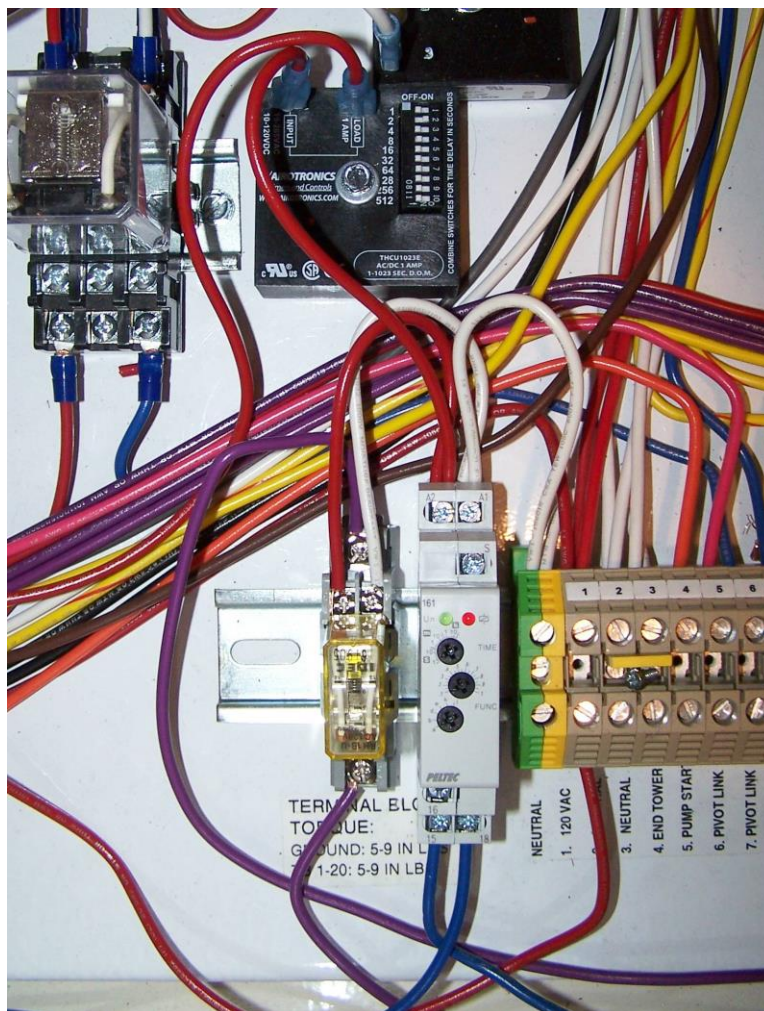


Figure 1

DELAY TIMER MOUNTING: This timer is mounted above the relay & one shot timer (Figure 2). Using the supplied drill bit, hold the timer in place and start drilling the mounting hole long enough to leave a mark in the back plate. Remove the timer and finish drilling the hole. Use the 8-32 X 1 1/2" self tapping screw with the flat washer and mount the timer (Figure 3).

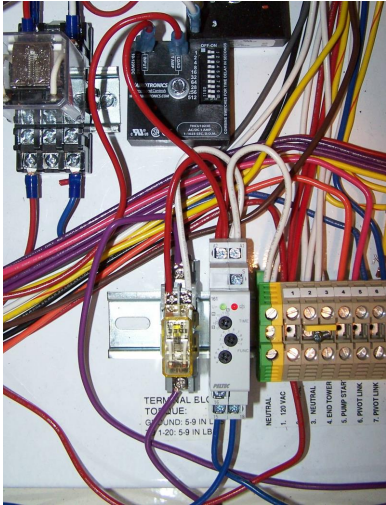


Figure 2

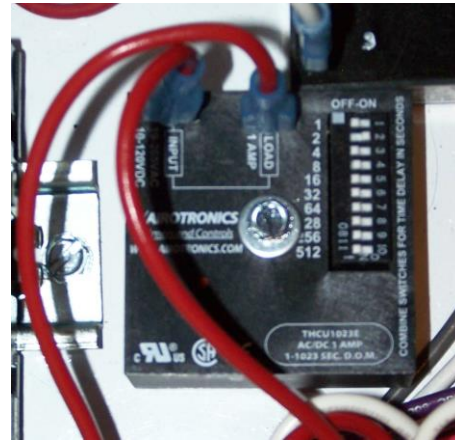


Figure 3

WIRING INSTRUCTIONS :

Remove the current red wire from the "Safety Relay" (Figure 4), the "START/RUN/STOP" switch (Figure 5). Install the new red wires with yellow quick connects to the "START/RUN/STOP" switch (Figure 5). The red wire labeled #3 connected to the "Safety Relay" lower left position (Figure 4). Install the red wire labeled #3 to the first "AUX" switch lower position (Figure 6).



Figure4

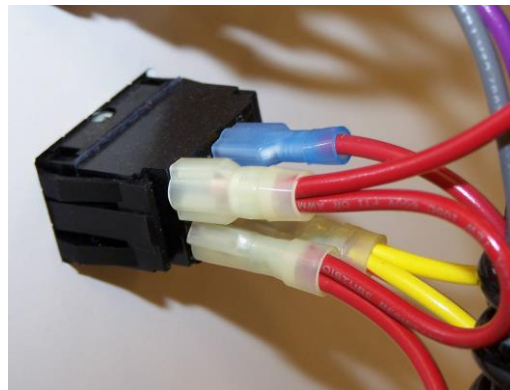


Figure 5

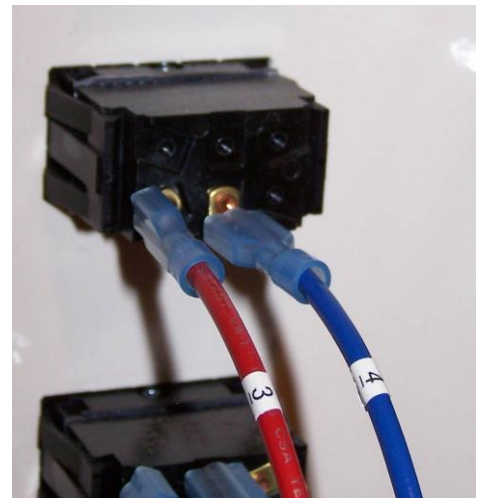


Figure 6

WIRING INSTRUCTIONS CONTINUED:

The blue wire labeled #4 connects to the first "AUX" switch center position (Figure 6). The blue wire labeled #5 connects to terminal block #10 (Figure 7). The purple wire labeled #6 connects to terminal block #11 (Figure 7) and the purple wire labeled #7 connects to terminal block #12 (Figure 7).

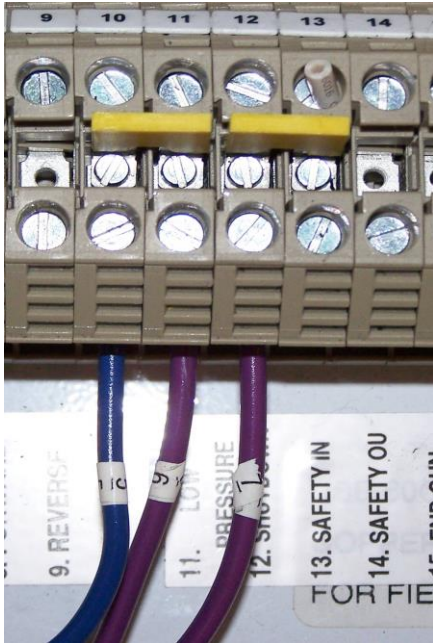


Figure 7

The white wire labeled #10 connects to the left ground terminal block (Figure 9). Make sure that the white jumper from terminal block #2 to the ground terminal block is still installed. If not, reinstall a jumper between these terminal blocks.

The red wire labeled #1 from the Pressure switch (Figure 8) connects to terminal block #1 (Figure 9).

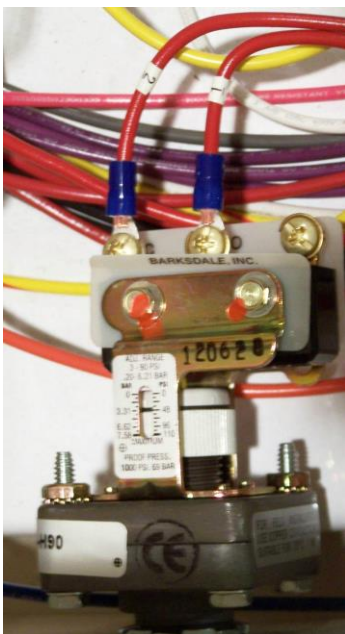


Figure 8

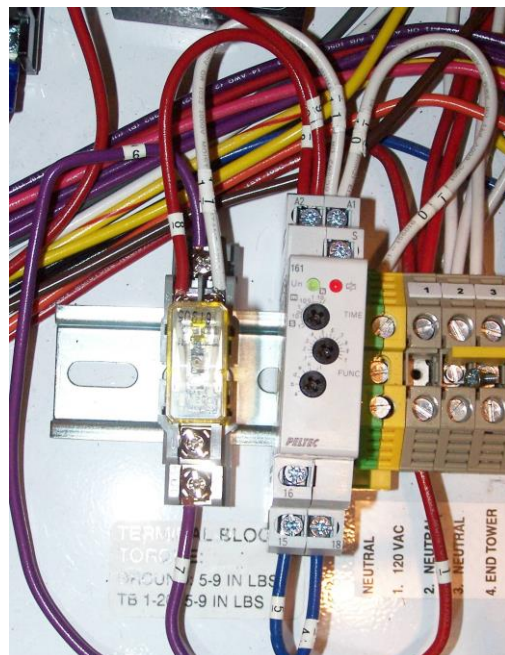


Figure 9

Place "AUTO RESTART" label as shown (Figure 10).



Figure 10

Use the supplied cable ties to secure the wires after all connections have been made.