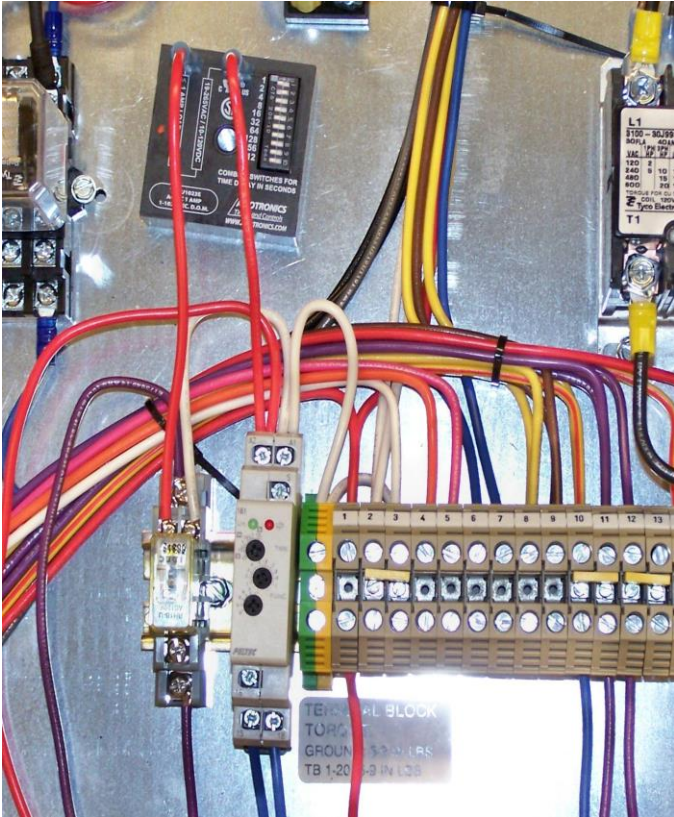
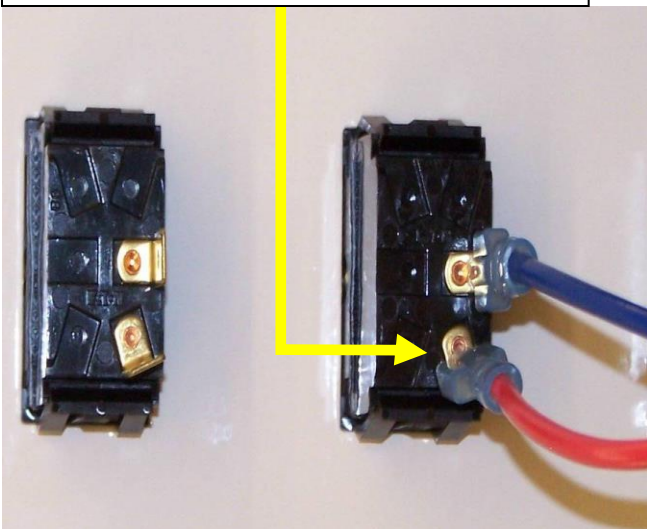


# PRESSURE AUTO-START / SHUT-DOWN INSTALLATION INSTRUCTIONS



- Auto Start timer is mounted left of the left-hand ground block.
- The “Neutral” White wire from “A1” is connected to the ground block.
- One Red wire from “A2” is connected to the “COM” position of pressure switch. The other Red wire from “A2” is connected to “1” position on “Delay on Make” timer.
- The Blue wire from “18” is connected to “AUX” switch. (see photo below left)
- The Blue wire from “15” is connected to “TB 10”.
- The Red wire from “TB1” connects to the “NO” position on pressure switch.
- The relay is mounted to the left of the Auto Start timer. The “Neutral” White wire from the relay coil is connected to “A1” on the Auto Start timer. The Red wire from the relay coil is connected to the “3” position on “Delay on Make” timer.
- The Purple wire from the “COM” position on relay connects to “TB11”. The purple wire from the “NO” position on relay connects to “TB12”.

Attach the terminal connector end of the provided Red wire as shown below.



Pull the current terminal connector off the position shown and cut the terminal off as close as possible to the terminal.

Insert the Red wire from the “Aux” switch and the Red wire of the “Start/Run” switch into the provided Yellow terminal connector and reattach to position shown

